

Xastra Matrix Matrix Creative Control Center

User's Guide

Contents

Introduction	1
Compatibility	2
Installing Xastra Matrix	3
Using Xastra Matrix application	4
Fan	5
Liquid Cooling & Air Cooling	13
Hardware	17
Setting	18

Introduction

Xastra Matrix is a matrix creative center, control and management software that is developed for Xastra Astra Series. Xastra Matrix has been built in matrix display customization, fan PWM control, ARGB lighting setting, real-time status monitoring, and fan management functions. Xastra Matrix is able to enhance the user experience by integrated various functions that makes users freely customize and adjust at ease.

Current Version

1.0.0.0

Compatibility

Supported Xastra Models

- Astra LZ240 ARGB
- Astra LZ360 ARGB
- Astra FZ120 ARGB

Supported Operating Systems

- Windows 10
- Windows 11

Installing Xastra Matrix

Download the Xastra Matrix application package

Steps

1. Go to Xastra Download Center or Xastra Matrix page on official website.
2. Locate Xastra Matrix application package.
3. Click **Download**.

Install Xastra Matrix

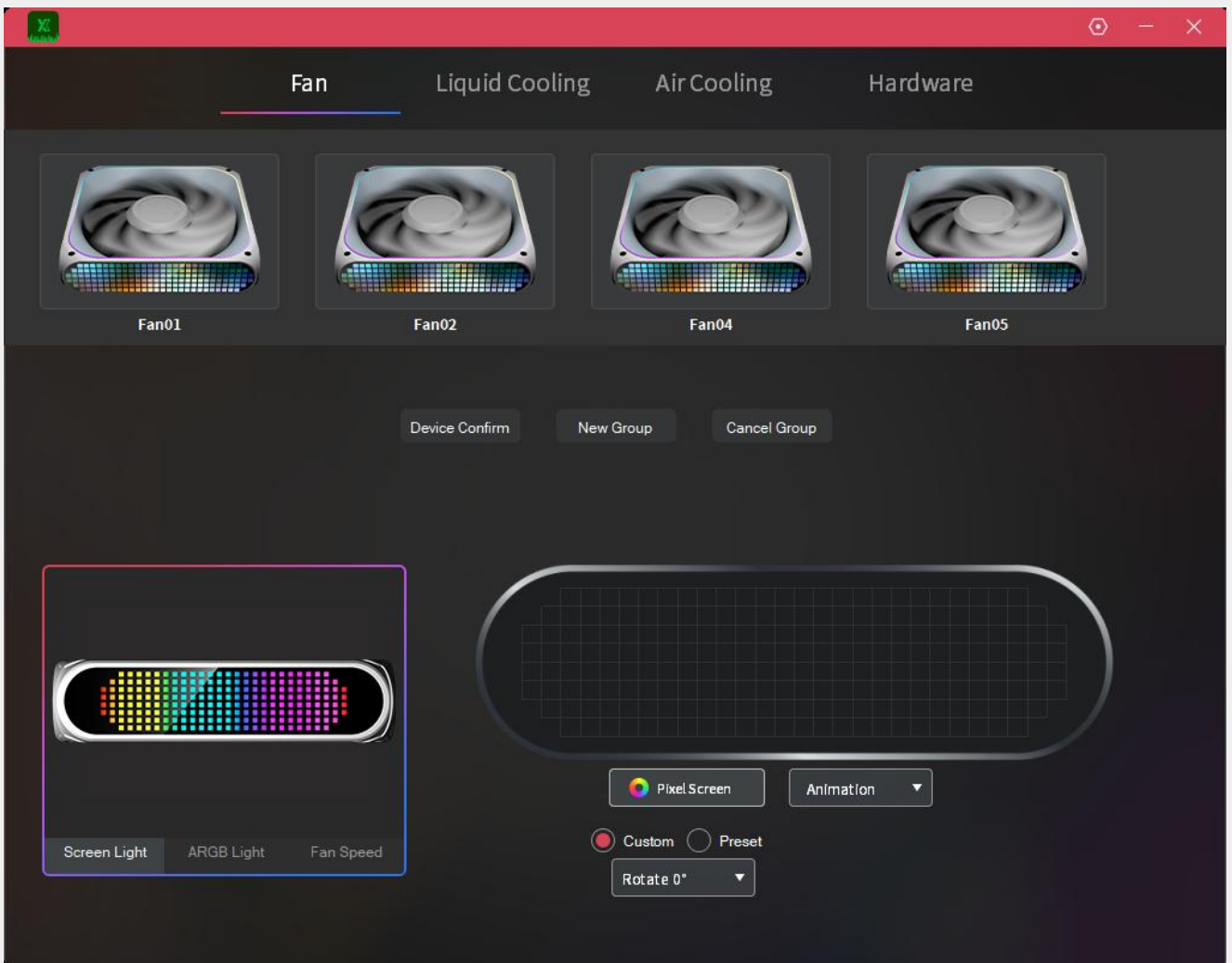
Steps

1. Browse to the location where you have downloaded the application package file, extracting the file and double-click the file.
2. Click **Install**.
3. Click **Finish**.

Using Xastra Matrix application

The Xastra Matrix has a different view depending on the selected tab.

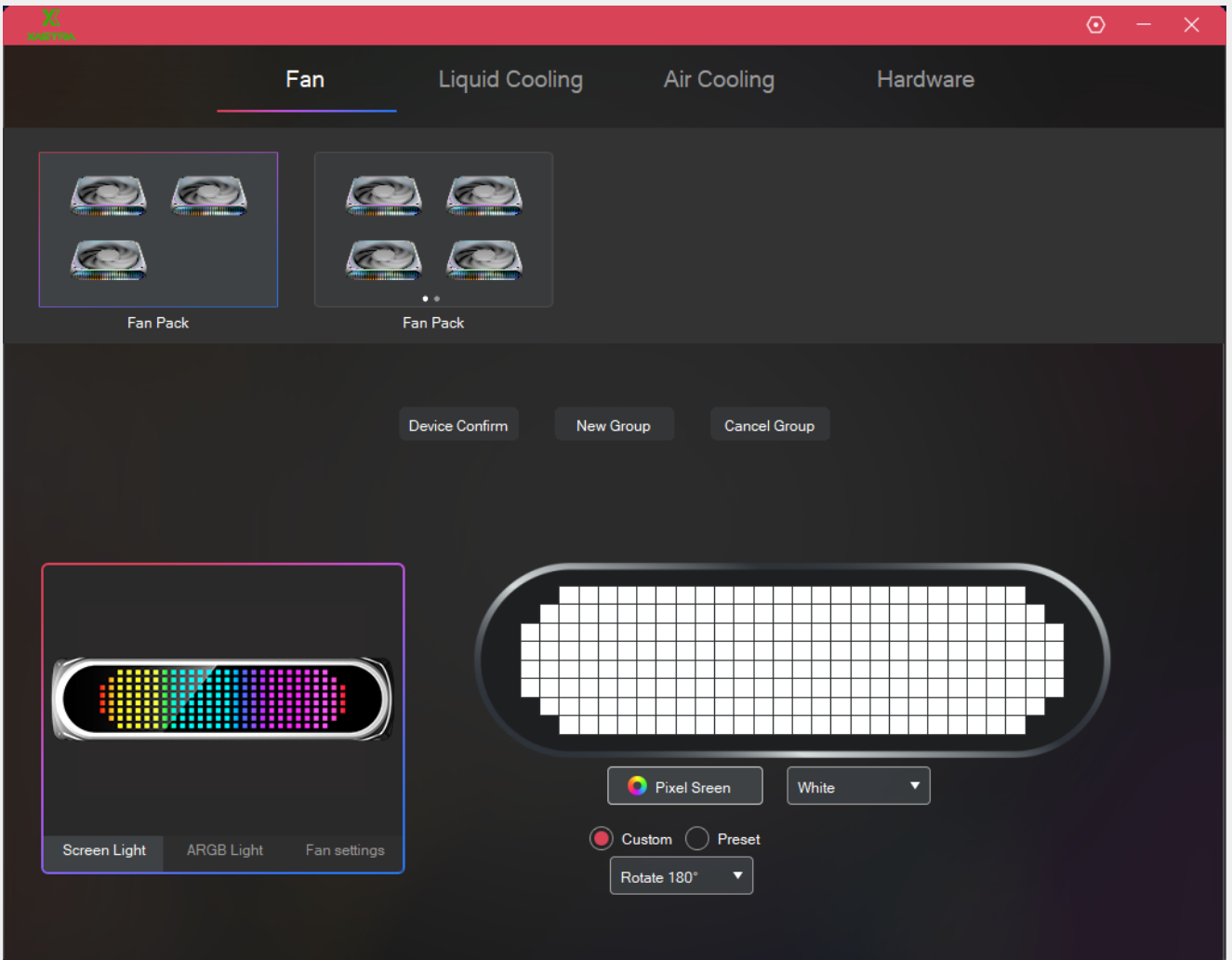
- **Fan** — Freely managing fan group, while customizing matrix screen, ARGB lighting, and fan speed.
- **Liquid Cooling** — Support matrix display customization on the liquid cooler.
- **Air Cooling** — Support matrix display customization on the air cooler.
- **Hardware** — Display your system configuration and current system states.



Fan

The **Fan** has an interface page that includes four main sections:

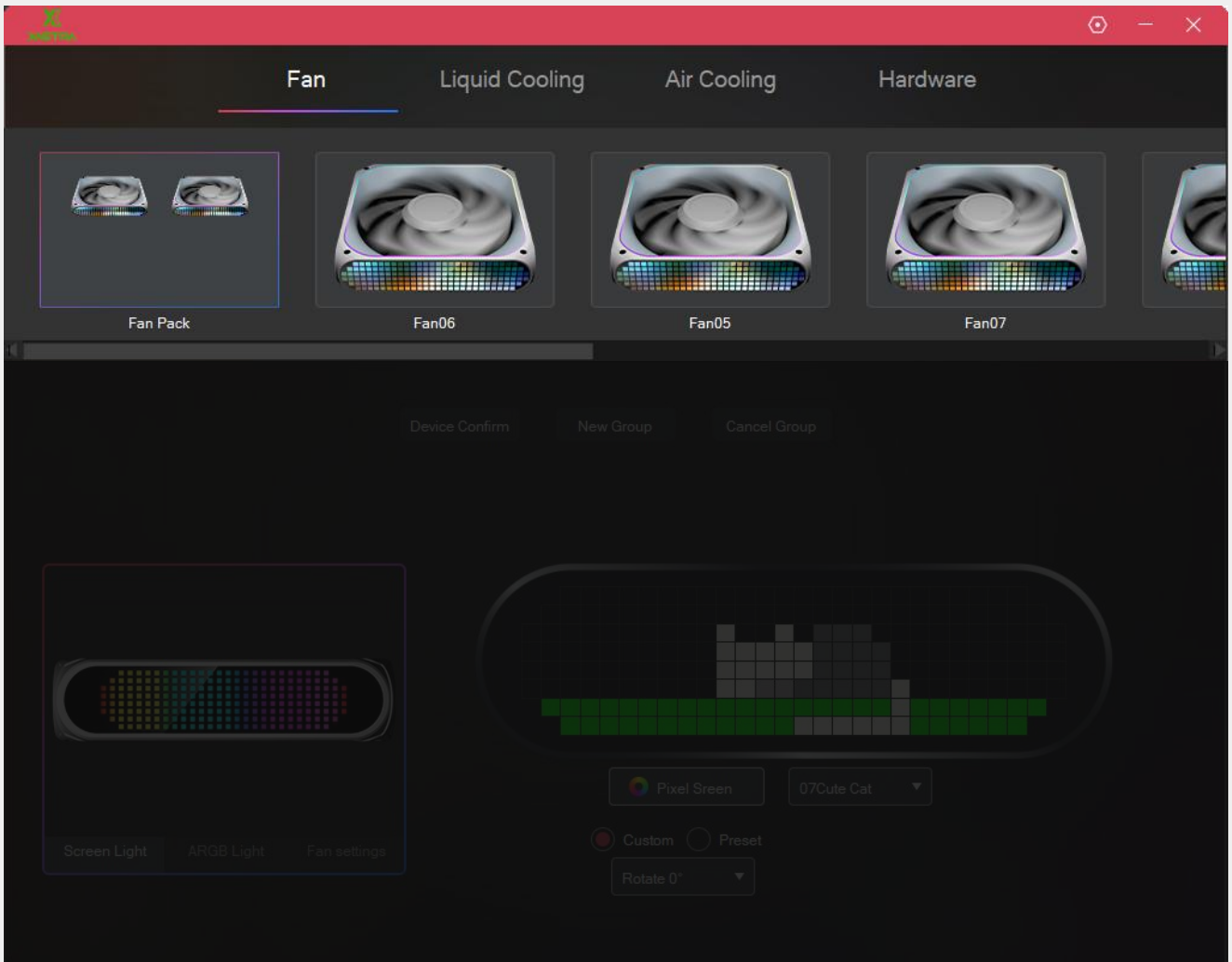
- Fan Management — Freely group the connected fans for flexible and unified customization.
- Matrix Customization — Built-in over 30 creative presets, supporting customization of matrix display via an intuitive drawing tool, while allowing users to create static or dynamic display, plus real-time states monitoring such as date, time, core temperature and speed.
- ARGB lighting — Supporting lighting control with precise RGB value adjustment, setting the brightness and transition speed, while being enable motherboard sync to be compatible with other lighting software.
- PWM Setting — Pre-setting Silent and Gaming Modes, while supporting custom fan speed control and motherboard synchronization.



Fan Management

Steps

1. Click and hold on the **FAN#** in the fan management bar, then drag it onto another **FAN#** to group the fans.
2. Once grouped, the icon will update to display a combined fan pack(The quantity of fans displayed equals the actual quantity grouped), the name will change to **Fan Pack**.
3. Select the corresponding **Fan Pack**, then click **Cancel Group** below to disband the group.

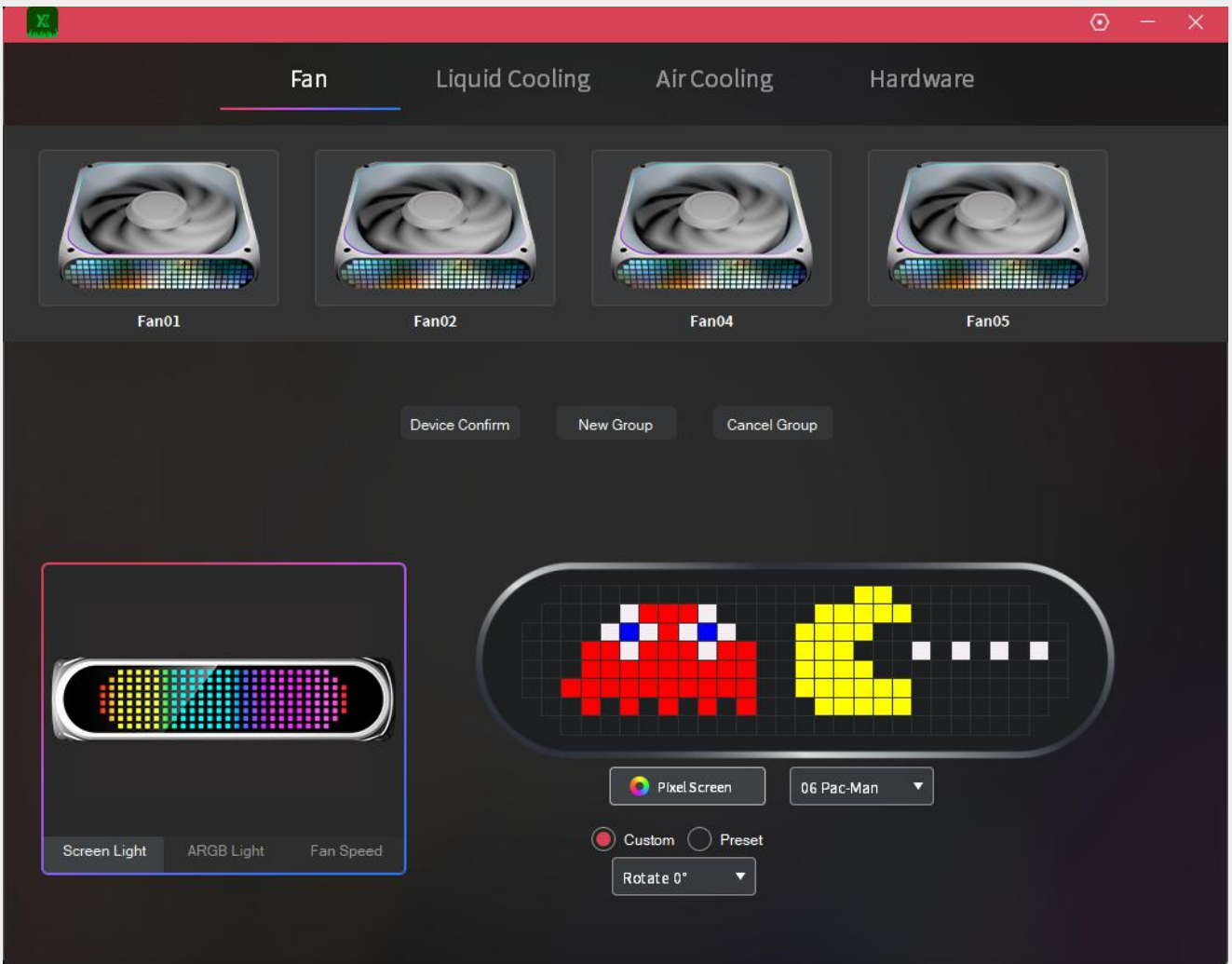


Matrix Customization

Steps

1. Click **Device Confirm** to confirm which fan corresponds to the one you selected in fan management bar.
2. Select **Screen Light** located below the product rendering on the page.
3. In the Matrix Customization section, select any adjustments of the following.
 - Choosing a Built-in Preset
 - Real-time System Information
 - Matrix Drawing Tool

NOTE: The **Rotate** drop-down menu at the bottom supports 0° and 180° screen rotation adjustment.

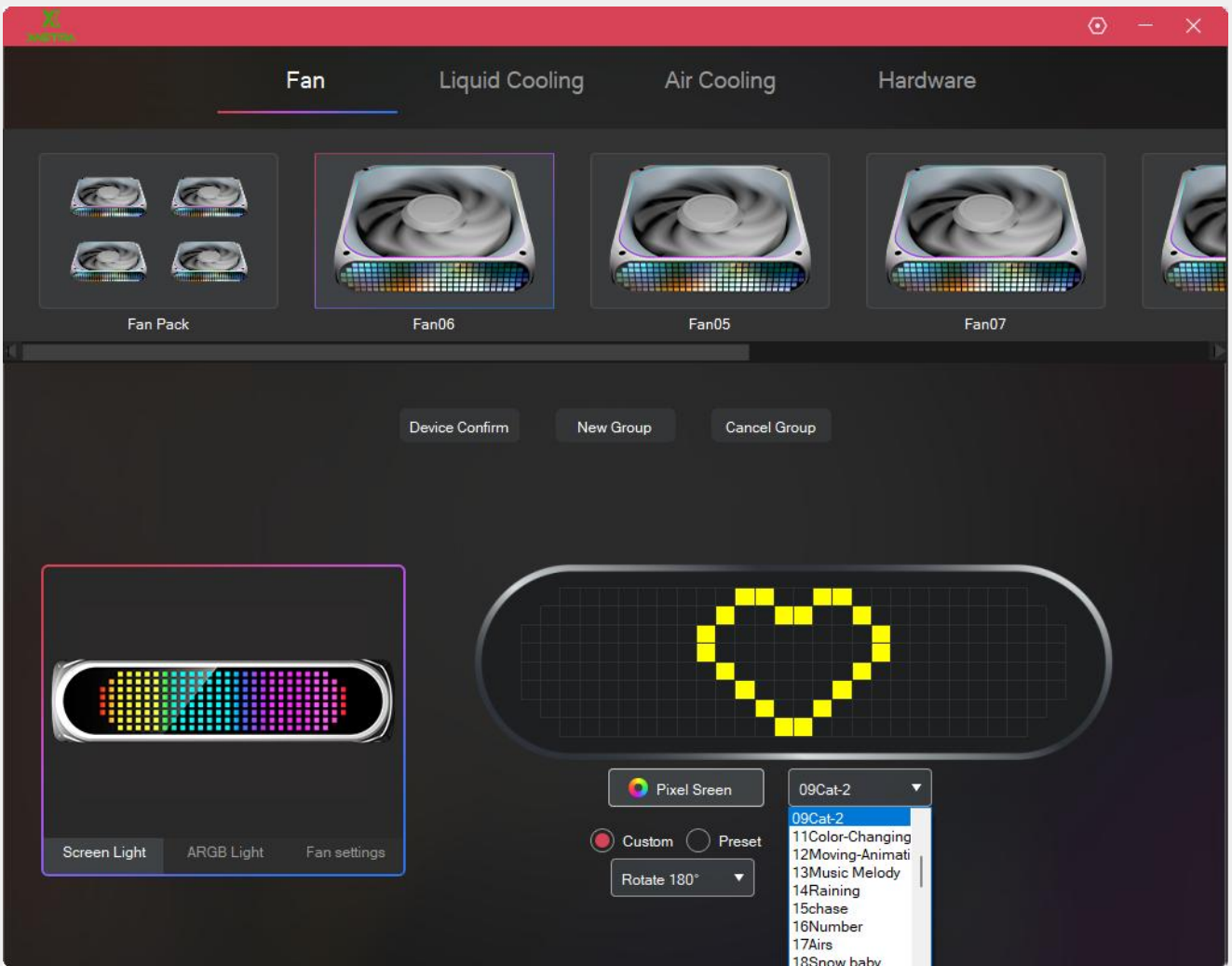


Choosing a Built-in Preset

Built-in over 30 presets from static to dynamic in different styles.

Steps

1. Select **Custom**.
2. Click the drop-down menu on the right side of **Matrix Screen**.
3. Choose your preferred preset.

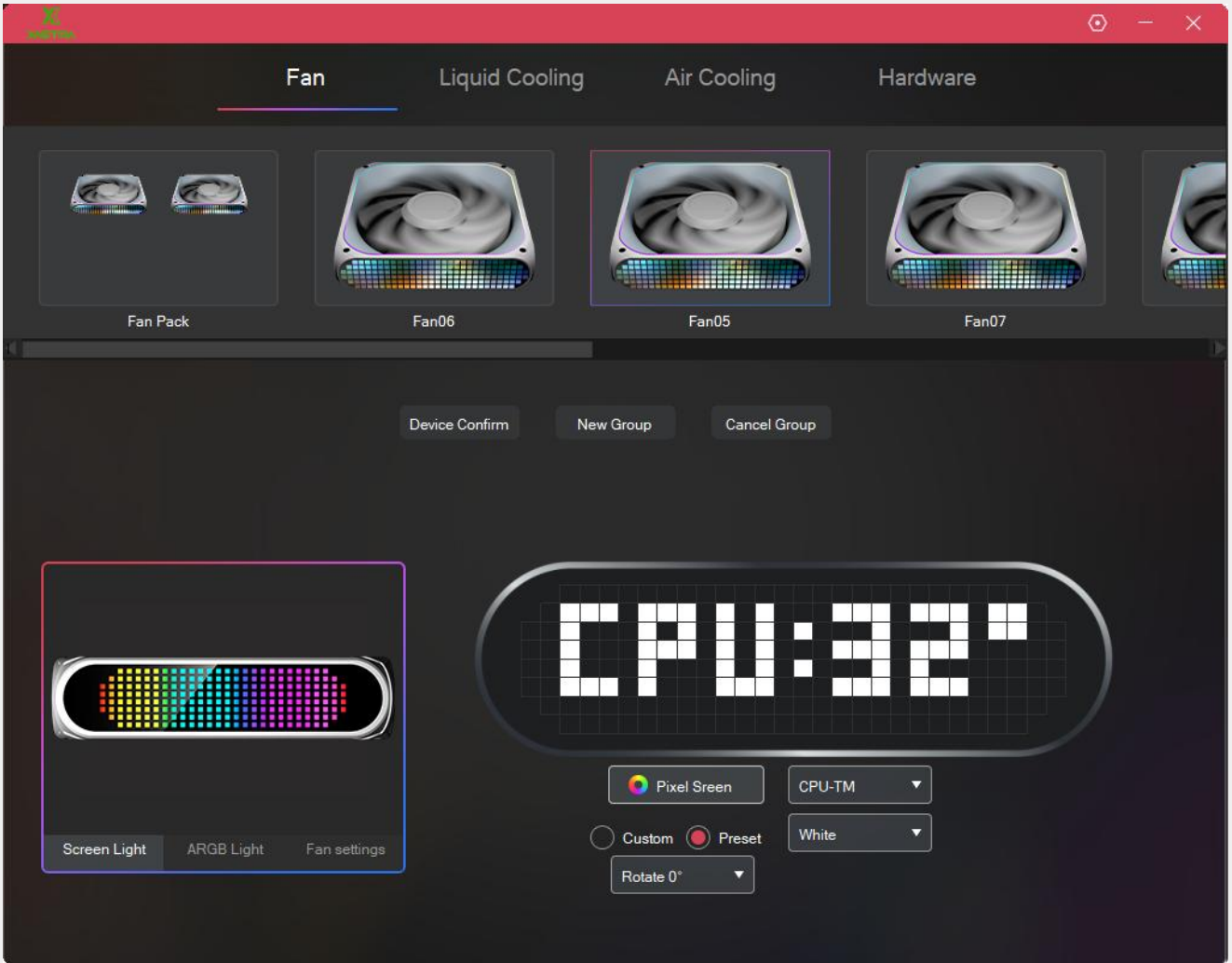


Real-time System Information

Setting real-time status monitoring such as date, time, core temperature and speed.

Steps

1. Select **Preset**.
2. Click the drop-down menu on the right side of **Matrix Screen**, and choosing your preferred pre-set function.
3. Click the **Color Selecting** drop-down menu on the right side of **Preset**, and choosing your preferred color.



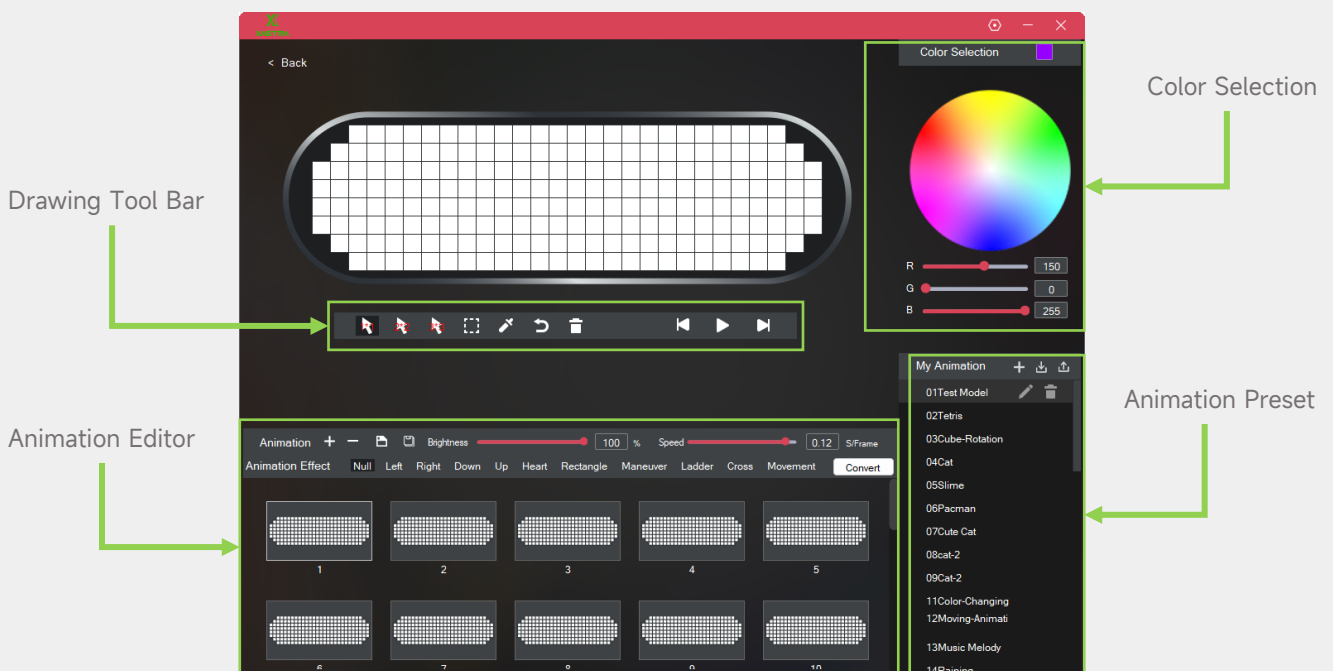
Matrix Drawing Tool

Utilizing an intuitive drawing tool to customize matrix screen display.

Steps

1. Click **Matrix Screen** to open the matrix drawing tool.
2. Create the matrix display in static or dynamic via the drawing tool and click **Save** button.
3. Choose **Custom**.
4. Click the drop-down menu on the right side of **Matrix Screen**.
5. Select the matrix display you've created.

Dashboard for Matrix Drawing Tool of Fan

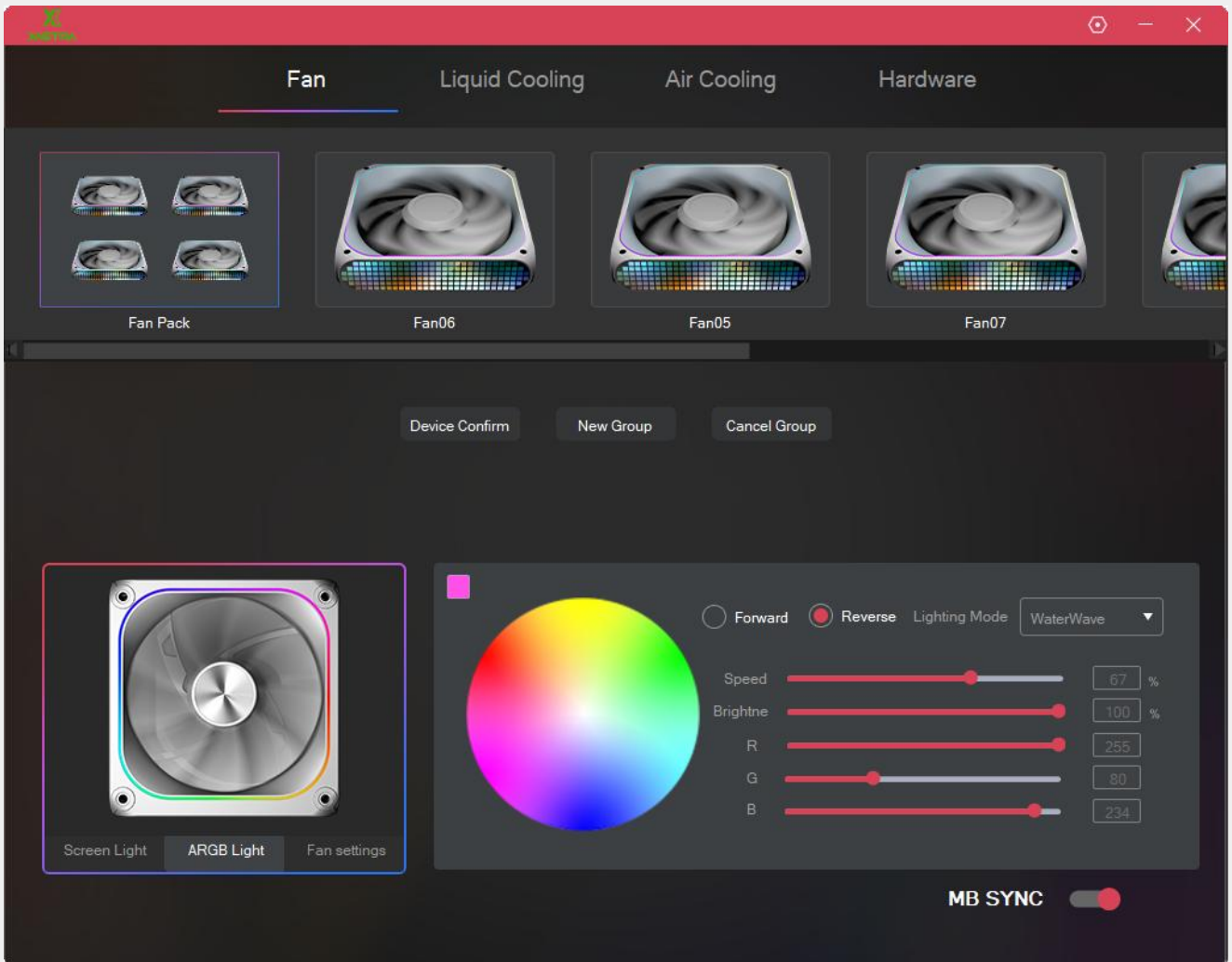


ARGB Lighting

Steps

1. Click **Device Confirm** to confirm which fan corresponds to the one you selected in fan management bar.
2. Select **ARGB Light** located below the product rendering on the page.
3. Make any adjustments you want to color, brightness, lighting effects, and more.

NOTE: The **MB SYNC** at the bottom enables the motherboard sync, allowing compatibility with other ARGB lighting control software.

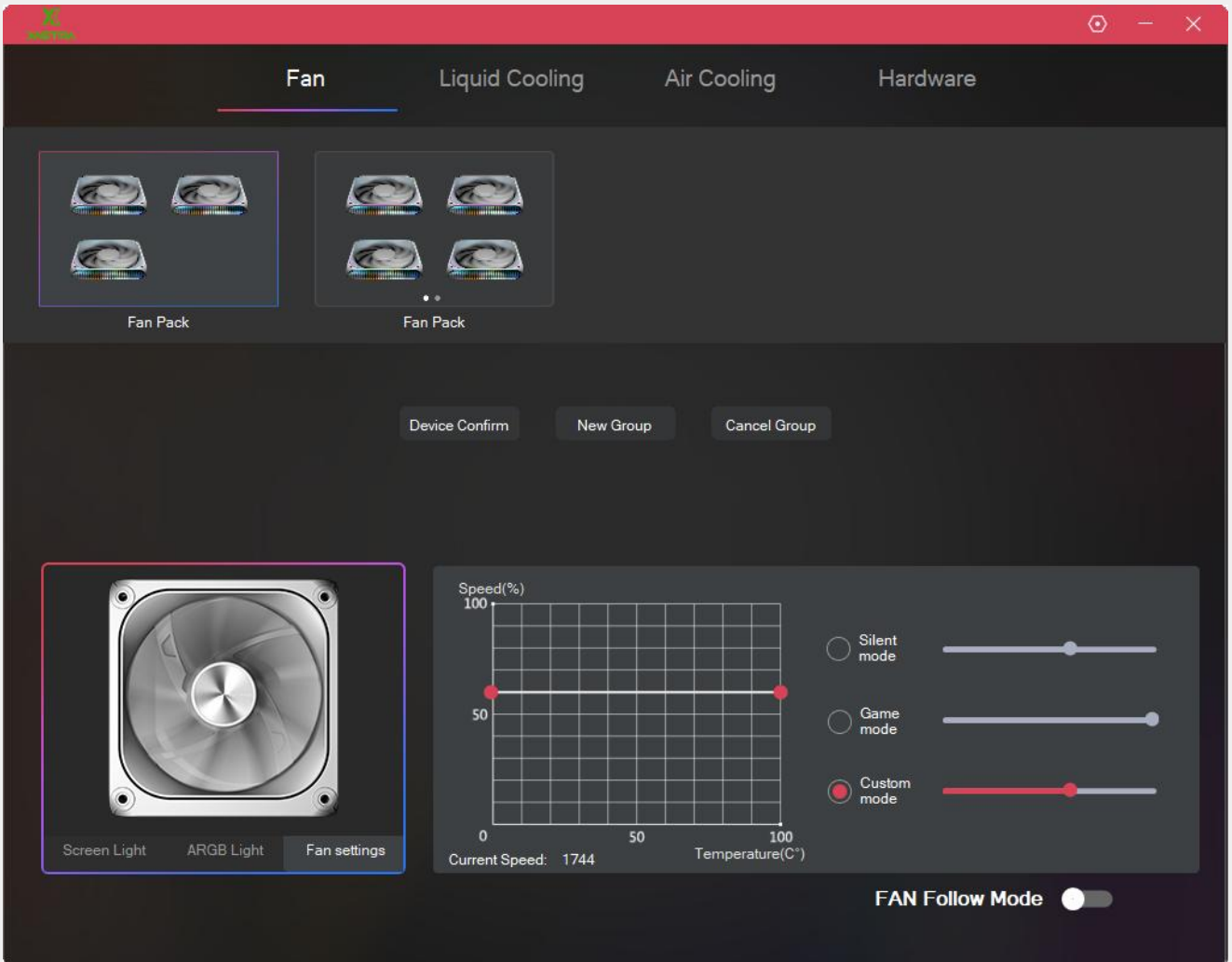


PWM Setting

Steps

1. Click **Device Confirm** to confirm which fan corresponds to the one you selected in fan management bar.
2. Select **Fan settings** located below the product rendering on the page.
3. In the **Fan settings** section, quickly switching presets:
 - Silent Mode — The fan operates at 60% speed of its maximum speed.
 - Game Mode — The fan operates at 100% speed of its maximum speed.
 - Custom — Customize the fan speed control strategy.

NOTE: The **Fan Follow Mode** at the bottom enables the motherboard sync, allowing compatibility with other Fan PWM control software.

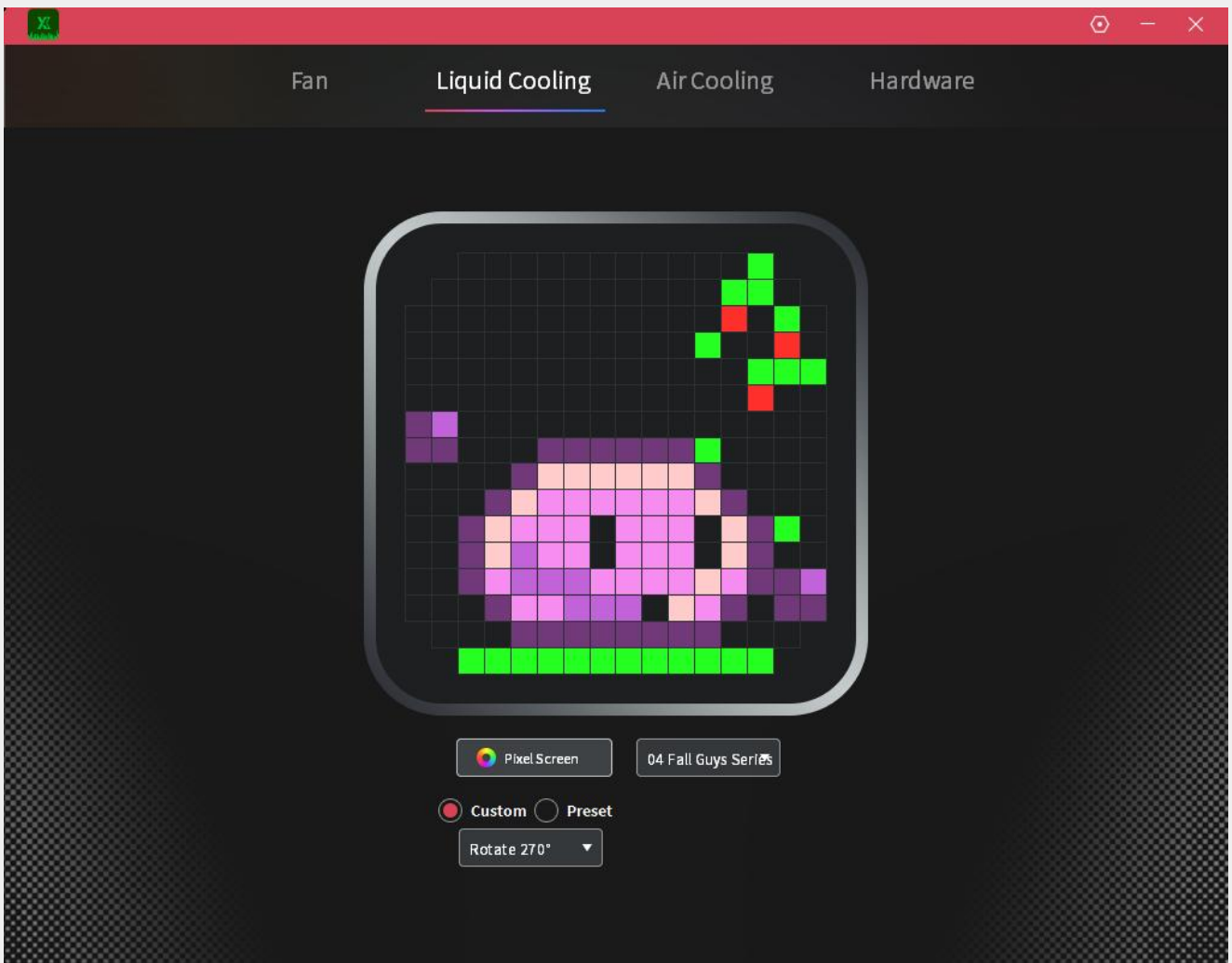


Liquid Cooling & Air Cooling

Personalize the matrix display on the liquid cooler using matrix customization.

- Matrix Customization — Built-in about 20 creative presets, supporting customization of matrix display via an intuitive drawing tool, while allowing users to create static or dynamic display, plus real-time states monitoring such as date, time, core temperature and speed.

NOTE: The **Rotate** drop-down menu at the bottom supports 0°, 90°, 180° and 270° screen rotation adjustment.

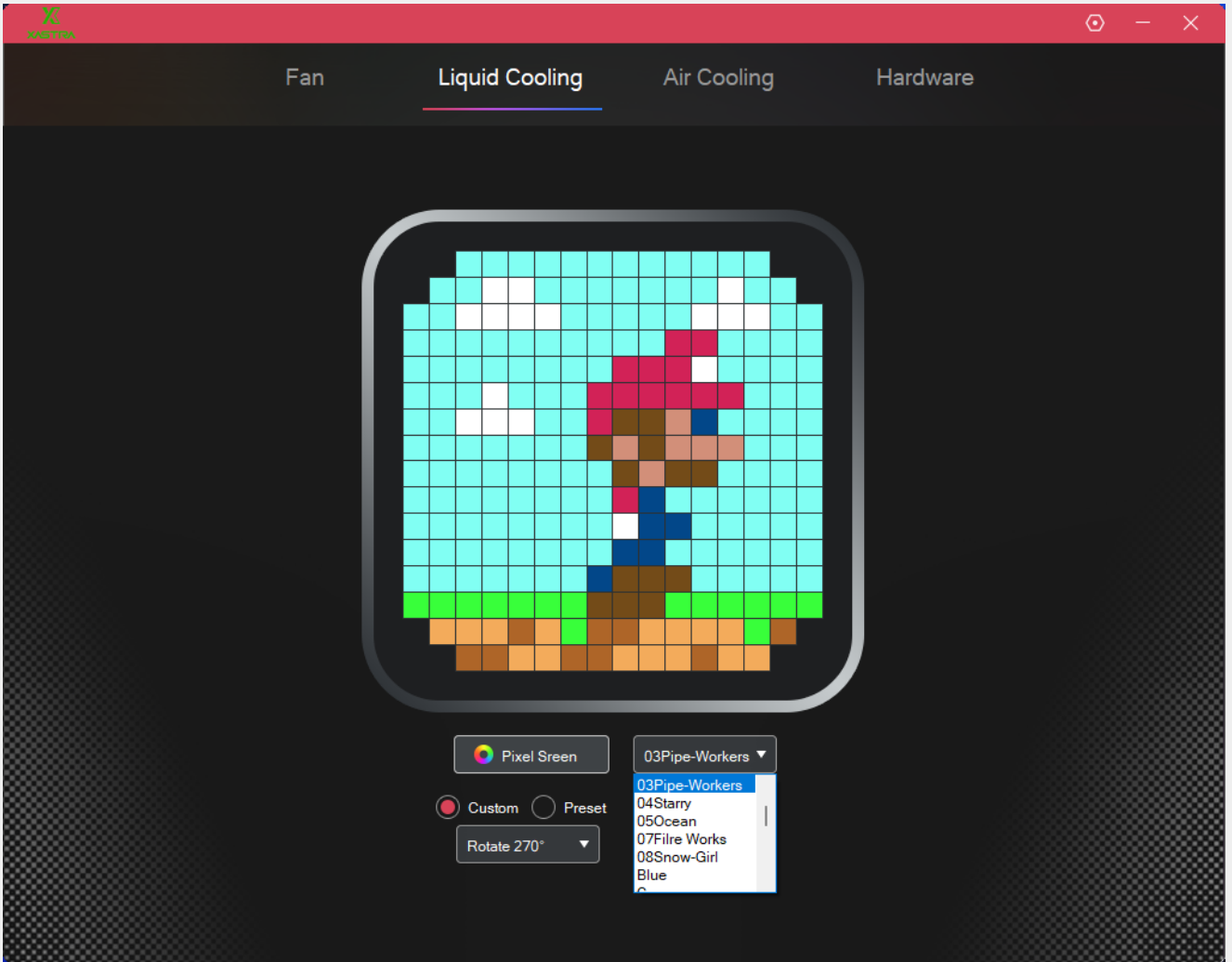


Choosing a Built-in Preset

Built-in about 20 presets from static to dynamic in different styles.

Steps

1. Select **Custom**.
2. Click the drop-down menu on the right side of **Matrix Screen**.
3. Choose your preferred preset.



Real-time System Information

Setting real-time status monitoring such as date, time, core temperature and speed.

Steps

1. Select **Preset**.
2. Click the drop-down menu on the right side of **Matrix Screen**, and choosing your preferred pre-set function.
3. Click the **Color Selecting** drop-down menu on the right side of **Preset**, and choosing your preferred color.



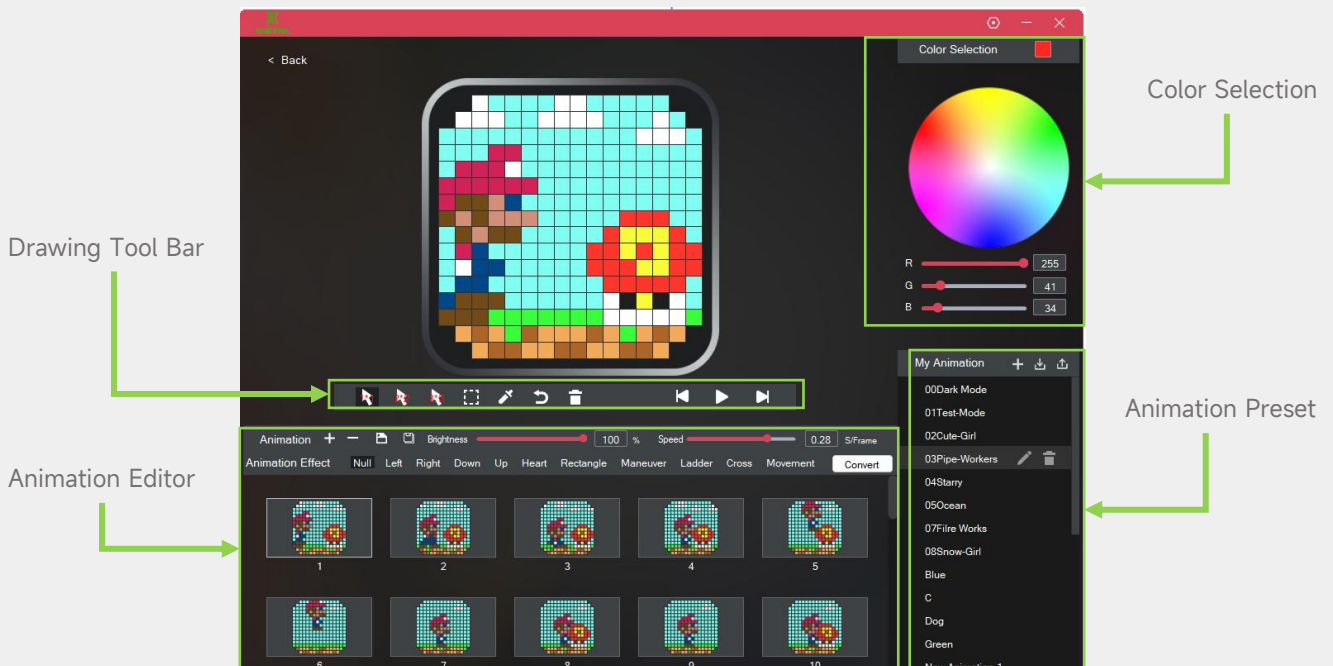
Matrix Drawing Tool

Utilizing an intuitive drawing tool to customize matrix screen display.

Steps

1. Click **Matrix Screen** to open the matrix drawing tool.
2. Create the matrix display in static or dynamic via the drawing tool and click **Save** button.
3. Choose **Custom**.
4. Click the drop-down menu on the right side of **Matrix Screen**.
5. Select the matrix display you've created.

Dashboard for Matrix Drawing Tool of Cooling

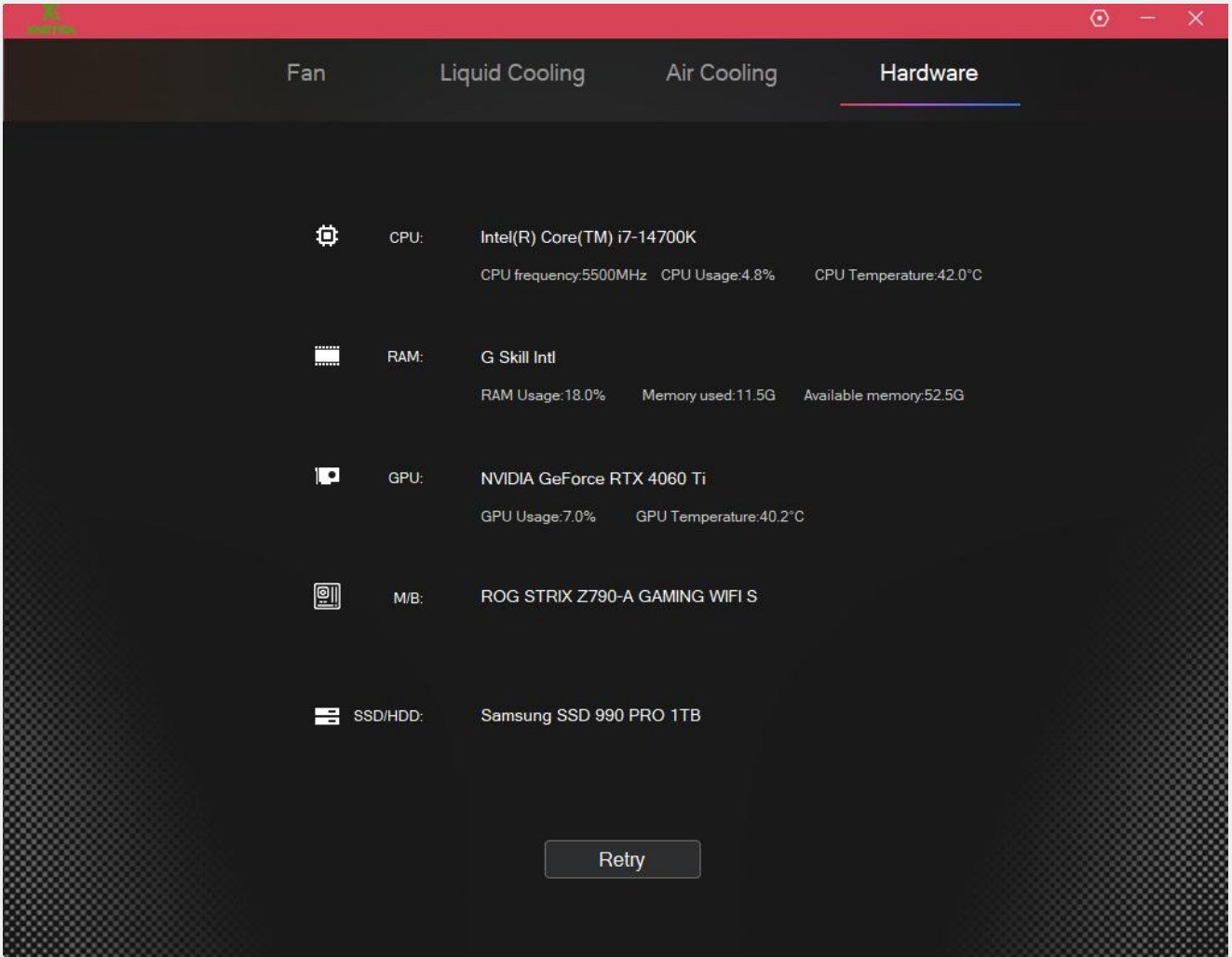


Hardware

The **Hardware** page displays the system configuration and current utilization information of your device.

System configuration and current utilization information includes the following:

- **CPU**
 - Model
 - Frequency
 - Usage
 - Temperature
- **RAM**
 - Model
 - Usage
 - Memory used
 - Available memory
- **GPU**
 - Model
 - Usage
 - Temperature
- **Motherboard**
 - Model
- **SSD/HDD**
 - Model



Setting

The settings section has **Language**, **Version**, and **Boot Startup**.

Language — To set app display language.

Version — The current app version.

Boot Startup — To change auto-launch on system boot.

