

**Xastra Pixel**  
**Pixel Creative Control Center**  
**User's Guide**

# Contents

|                                      |    |
|--------------------------------------|----|
| Introduction .....                   | 1  |
| Compatibility .....                  | 2  |
| Installing Xastra Pixel .....        | 3  |
| Using Xastra Pixel application ..... | 4  |
| Fan .....                            | 5  |
| Liquid Cooling & Air Cooling .....   | 13 |
| Hardware .....                       | 17 |
| Setting .....                        | 18 |

# Introduction

Xastra Pixel is a pixel creative center, control and management software that is developed for Xastra Astra Series. Xastra Pixel has been built in pixel display customization, fan PWM control, ARGB lighting setting, real-time status monitoring, and fan management functions. Xastra Pixel is able to enhance the user experience by integrated various functions that makes users freely customize and adjust at ease.

## Current Version

1.0.0.0

# Compatibility

## Supported Xastra Models

- Astra LZ240 ARGB
- Astra LZ360 ARGB
- Astra FZ120 ARGB

## Supported Operating Systems

- Windows 10
- Windows 11

# Installing Xastra Pixel

## Download the Xastra Pixel application package

### Steps

1. Go to Xastra Download Center or Xastra Pixel page on official website.
2. Locate Xastra Pixel application package.
3. Click **Download**.

## Install Xastra Pixel

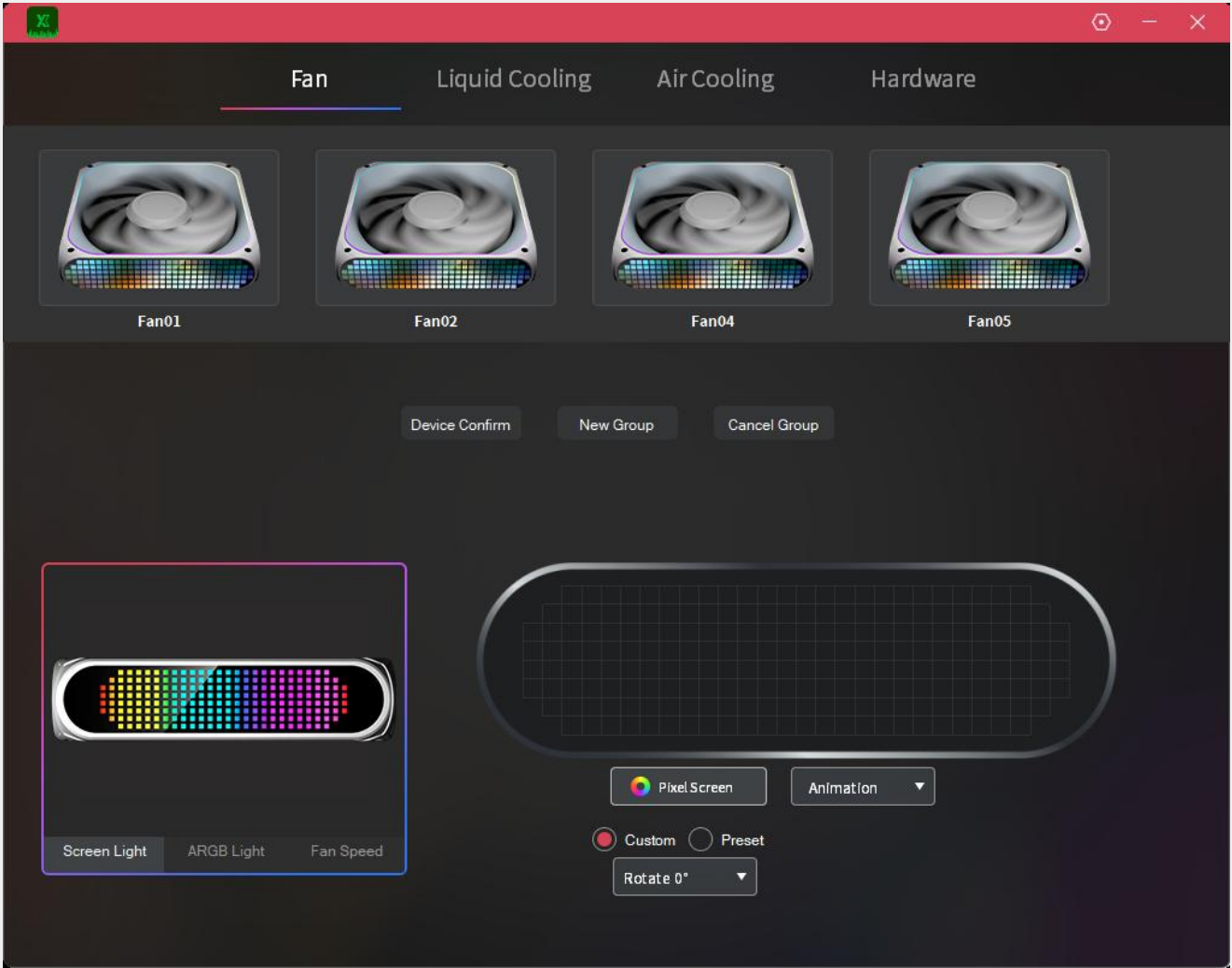
### Steps

1. Browse to the location where you have downloaded the application package file, extracting the file and double-click the file.
2. Click **Install**.
3. Click **Finish**.

# Using Xastra Pixel application

The Xastra Pixel has a different view depending on the selected tab.

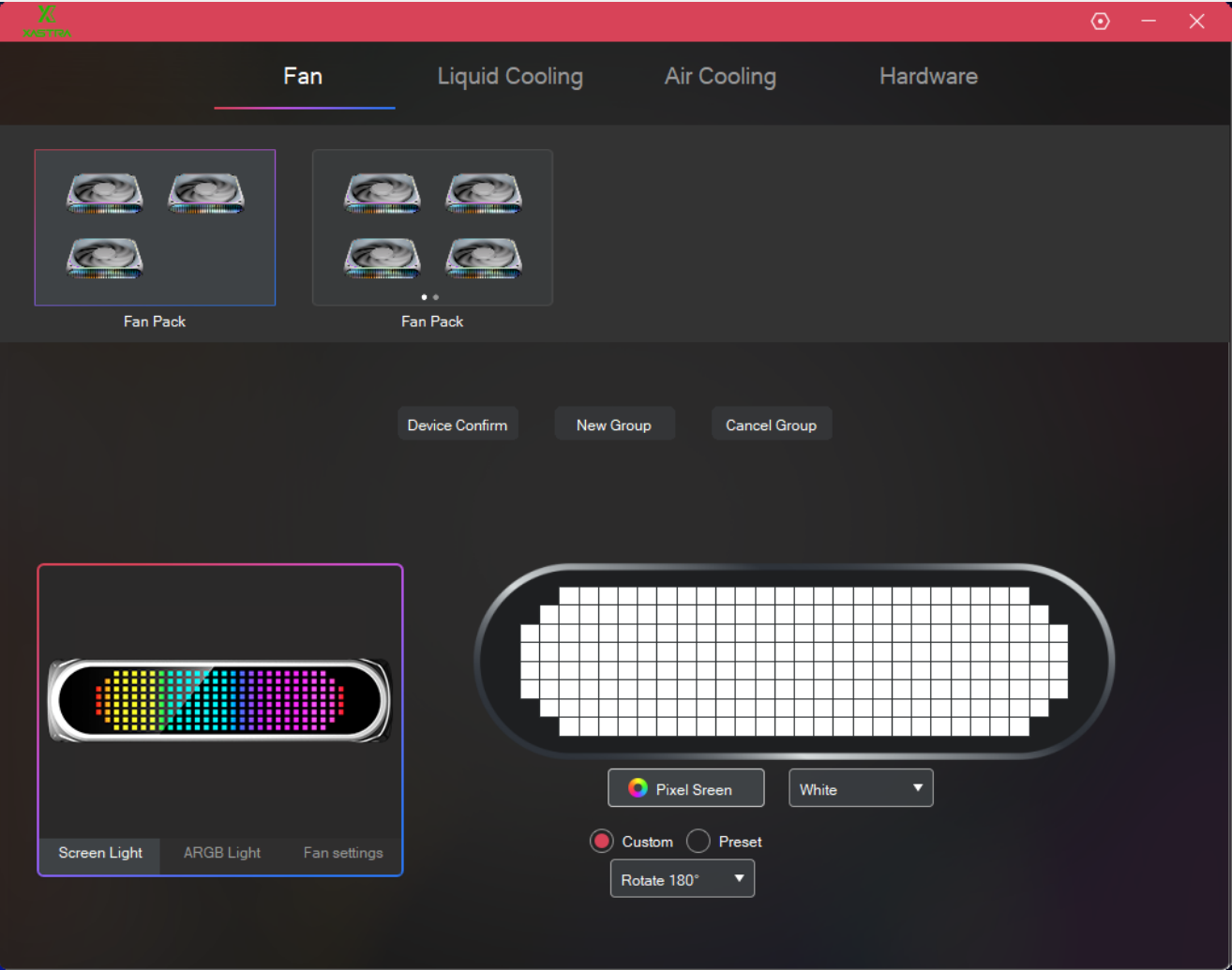
- **Fan** — Freely managing fan group, while customizing pixel screen, ARGB lighting, and fan speed.
- **Liquid Cooling** — Support pixel display customization on the liquid cooler.
- **Air Cooling** — Support pixel display customization on the air cooler.
- **Hardware** — Display your system configuration and current system states.



# Fan

The **Fan** has an interface page that includes four main sections:

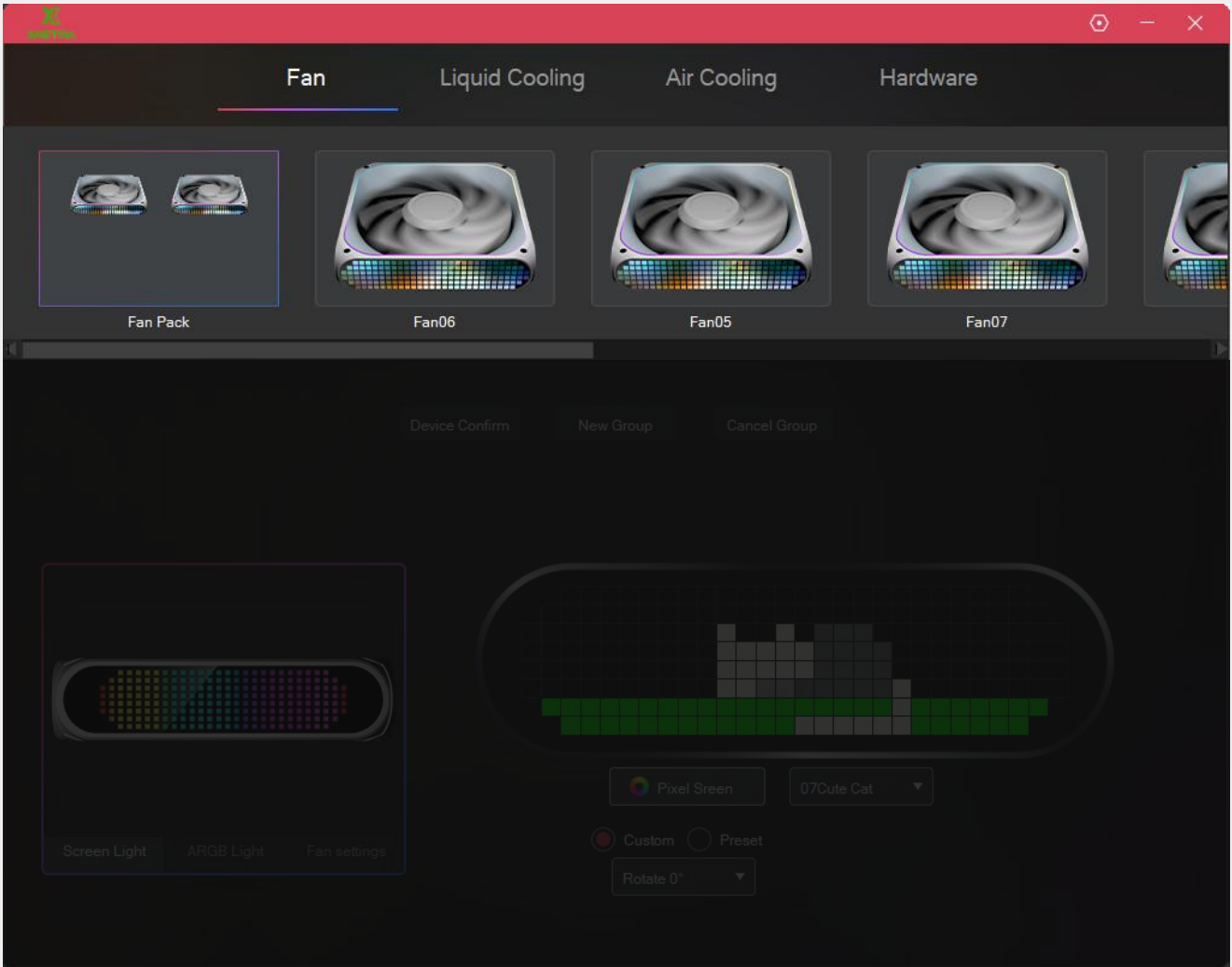
- Fan Management — Freely group the connected fans for flexible and unified customization.
- Pixel Customization — Built-in over 30 creative presets, supporting customization of pixel display via an intuitive drawing tool, while allowing users to create static or dynamic display, plus real-time states monitoring such as date, time, core temperature and speed.
- ARGB lighting — Supporting lighting control with precise RGB value adjustment, setting the brightness and transition speed, while being enable motherboard sync to be compatible with other lighting software.
- PWM Setting — Pre-setting Silent and Gaming Modes, while supporting custom fan speed control and motherboard synchronization.



# Fan Management

## Steps

- 1. Click and hold on the **FAN#** in the fan management bar, then drag it onto another **FAN#** to group the fans.
- 2. Once grouped, the icon will update to display a combined fan pack(The quantity of fans displayed equals the actual quantity grouped), the name will change to **Fan Pack**.
- 3. Select the corresponding **Fan Pack**, then click **Cancel Group** below to disband the group.



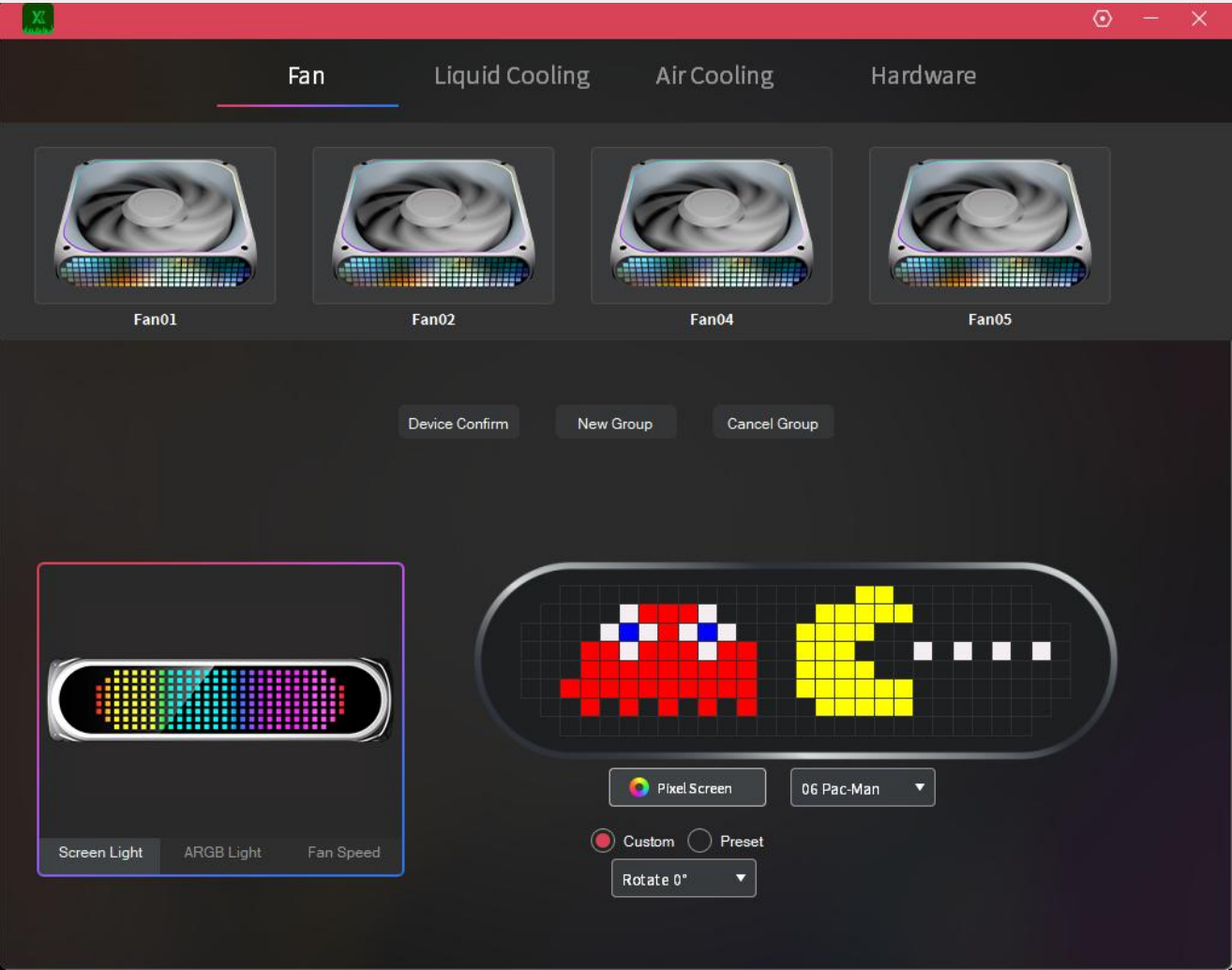


# Pixel Customization

## Steps

1. Click **Device Confirm** to confirm which fan corresponds to the one you selected in fan management bar.
2. Select **Screen Light** located below the product rendering on the page.
3. In the Pixel Customization section, select any adjustments of the following.
  - Choosing a Built-in Preset
  - Real-time System Information
  - Pixel Drawing Tool

NOTE: The **Rotate** drop-down menu at the bottom supports 0° and 180° screen rotation adjustment.

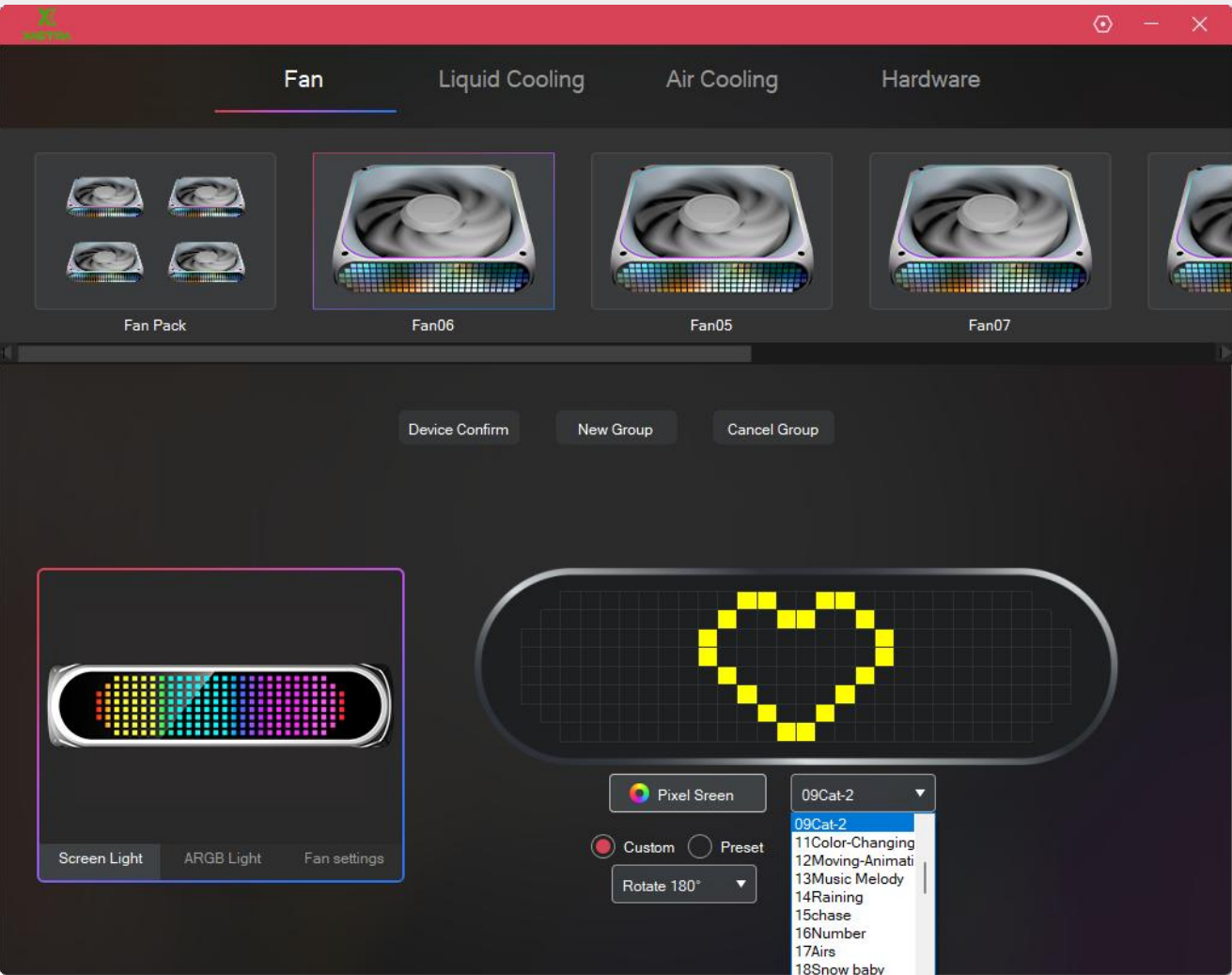


# Choosing a Built-in Preset

Built-in over 30 presets from static to dynamic in different styles.

## Steps

- 1. Select **Custom**.
- 2. Click the drop-down menu on the right side of **Pixel Screen**.
- 3. Choose your preferred preset.



# Real-time System Information

Setting real-time status monitoring such as date, time, core temperature and speed.

## Steps

- 1. Select **Preset**.
- 2. Click the drop-down menu on the right side of **Pixel Screen**, and choosing your preferred pre-set function.
- 3. Click the **Color Selecting** drop-down menu on the right side of **Preset**, and choosing your preferred color.



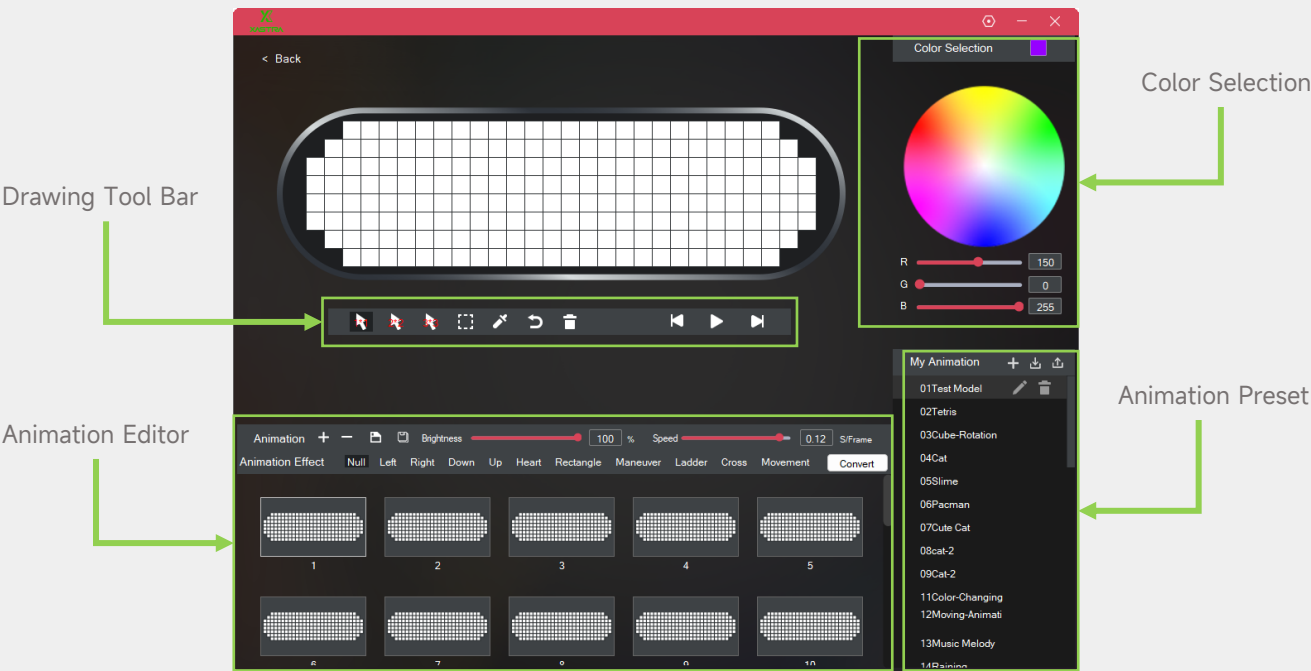
# Pixel Drawing Tool

Utilizing an intuitive drawing tool to customize pixel screen display.

## Steps

- 1. Click **Pixel Screen** to open the pixel drawing tool.
- 2. Create the pixel display in static or dynamic via the drawing tool and click **Save** button.
- 3. Choose **Custom**.
- 4. Click the drop-down menu on the right side of **Pixel Screen**.
- 5. Select the pixel display you've created.

## Dashboard for Pixel Drawing Tool of Fan



# ARGB Lighting

## Steps

- 1. Click **Device Confirm** to confirm which fan corresponds to the one you selected in fan management bar.
- 2. Select **ARGB Light** located below the product rendering on the page.
- 3. Make any adjustments you want to color, brightness, lighting effects, and more.

NOTE: The **MB SYNC** at the bottom enables the motherboard sync, allowing compatibility with other ARGB lighting control software.

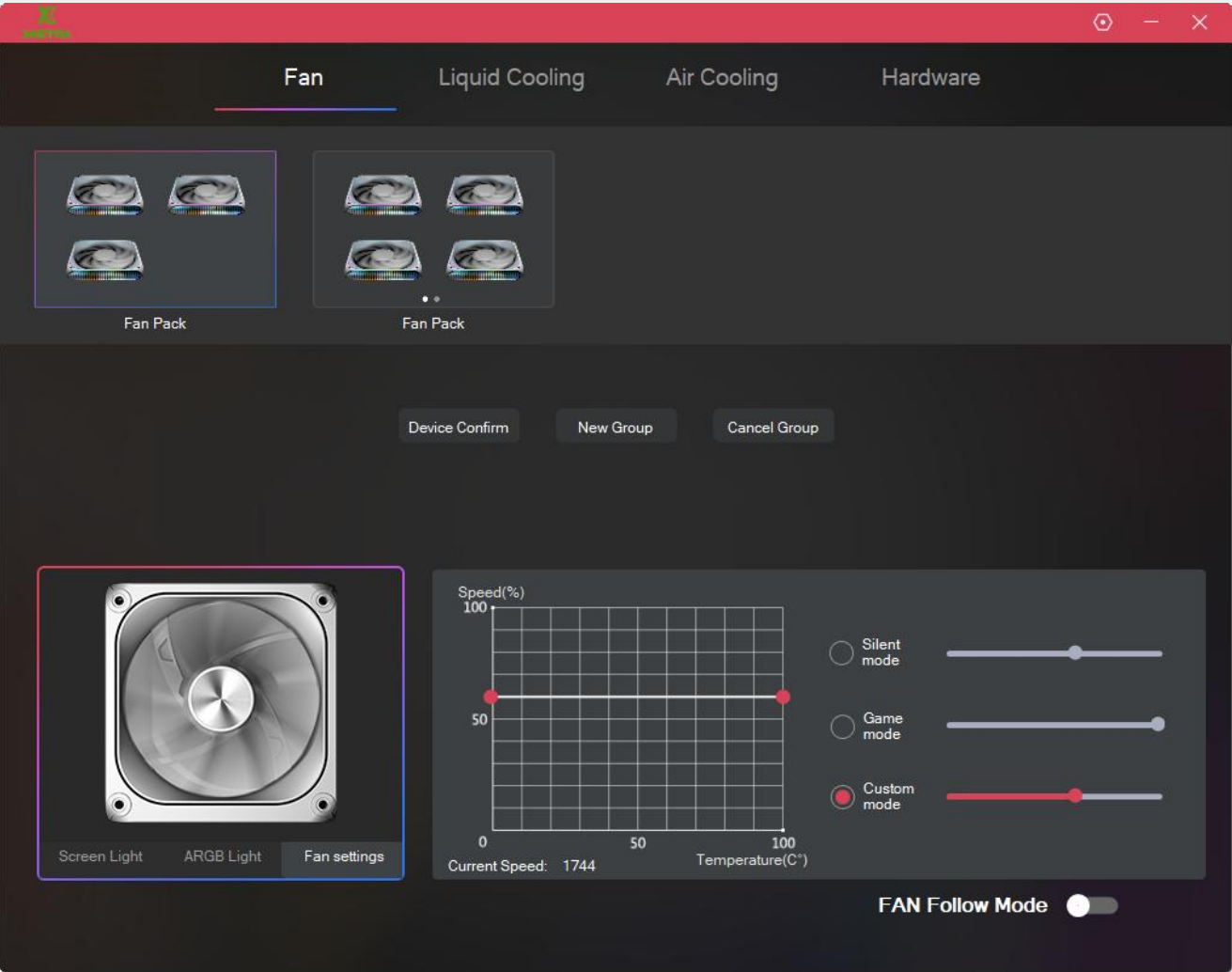


# PWM Setting

## Steps

1. Click **Device Confirm** to confirm which fan corresponds to the one you selected in fan management bar.
2. Select **Fan settings** located below the product rendering on the page.
3. In the **Fan settings** section, quickly switching presets:
  - Silent Mode — The fan operates at 60% speed of its maximum speed.
  - Game Mode — The fan operates at 100% speed of its maximum speed.
  - Custom — Customize the fan speed control strategy.

NOTE: The **Fan Follow Mode** at the bottom enables the motherboard sync, allowing compatibility with other Fan PWM control software.

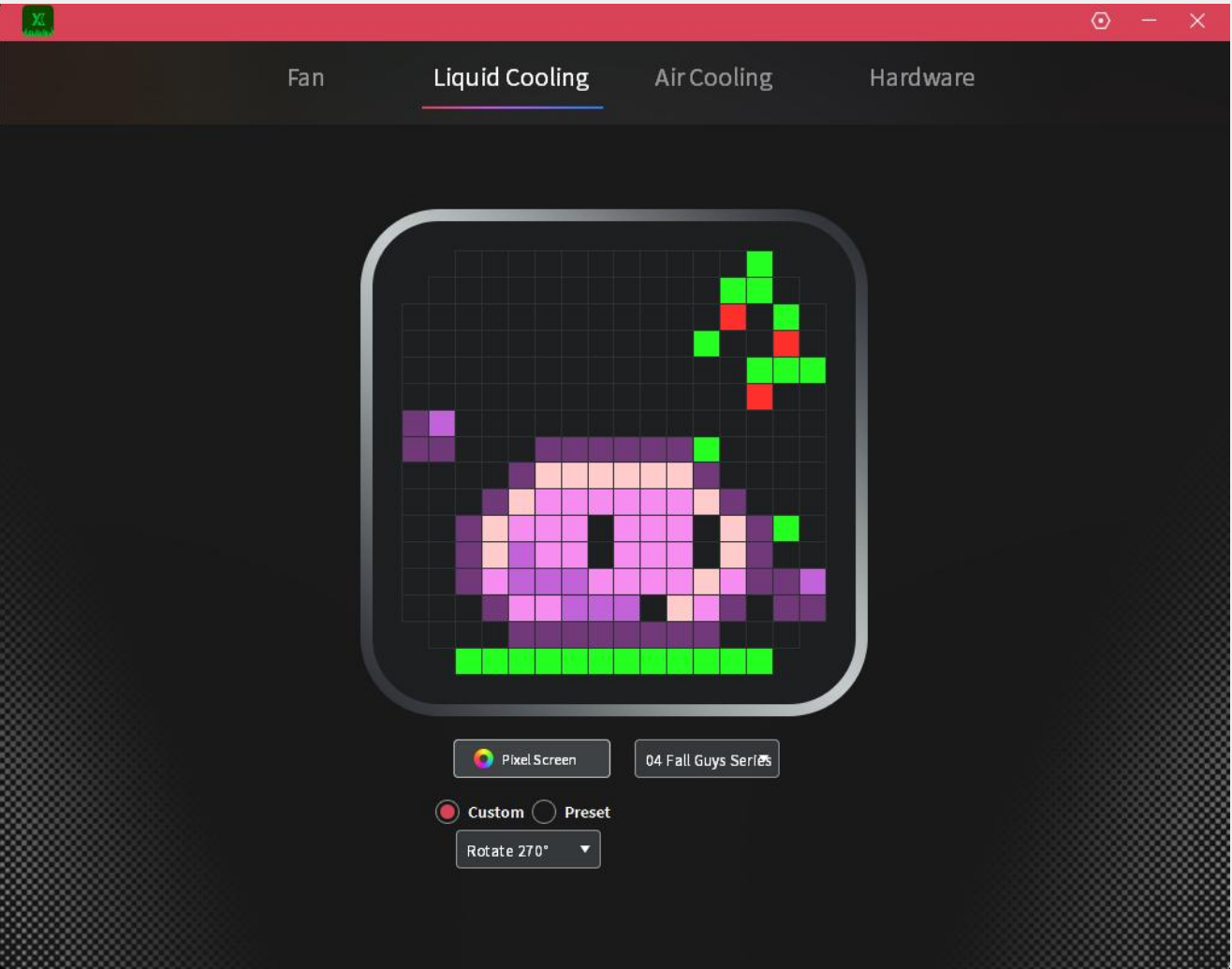


# Liquid Cooling & Air Cooling

Personalize the pixel display on the liquid cooler using pixel customization.

- Pixel Customization — Built-in about 20 creative presets, supporting customization of pixel display via an intuitive drawing tool, while allowing users to create static or dynamic display, plus real-time states monitoring such as date, time, core temperature and speed.

NOTE: The **Rotate** drop-down menu at the bottom supports 0°, 90°, 180° and 270° screen rotation adjustment.

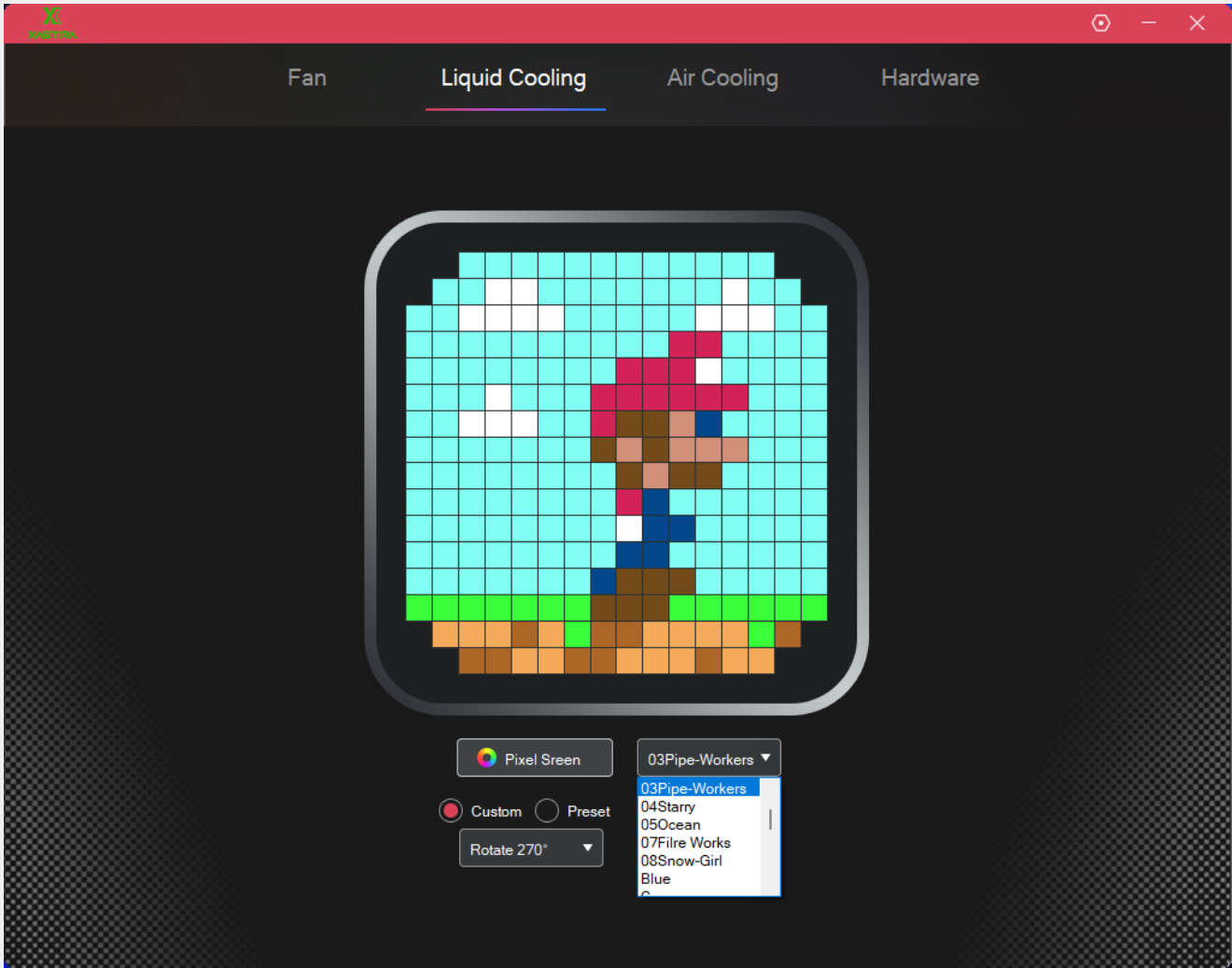


# Choosing a Built-in Preset

Built-in about 20 presets from static to dynamic in different styles.

## Steps

- 1. Select **Custom**.
- 2. Click the drop-down menu on the right side of **Pixel Screen**.
- 3. Choose your preferred preset.





# Real-time System Information

Setting real-time status monitoring such as date, time, core temperature and speed.

## Steps

- 1. Select **Preset**.
- 2. Click the drop-down menu on the right side of **Pixel Screen**, and choosing your preferred pre-set function.
- 3. Click the **Color Selecting** drop-down menu on the right side of **Preset**, and choosing your preferred color.



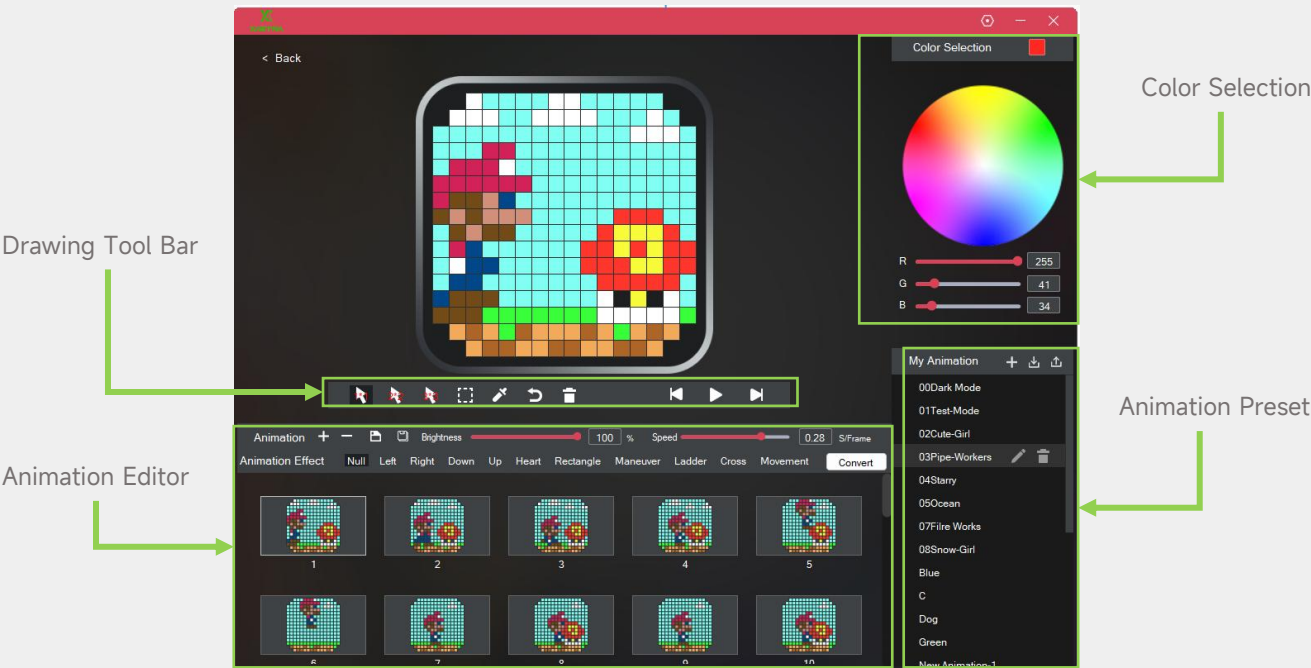
# Pixel Drawing Tool

Utilizing an intuitive drawing tool to customize pixel screen display.

## Steps

- 1. Click **Pixel Screen** to open the pixel drawing tool.
- 2. Create the pixel display in static or dynamic via the drawing tool and click **Save** button.
- 3. Choose **Custom**.
- 4. Click the drop-down menu on the right side of **Pixel Screen**.
- 5. Select the pixel display you've created.

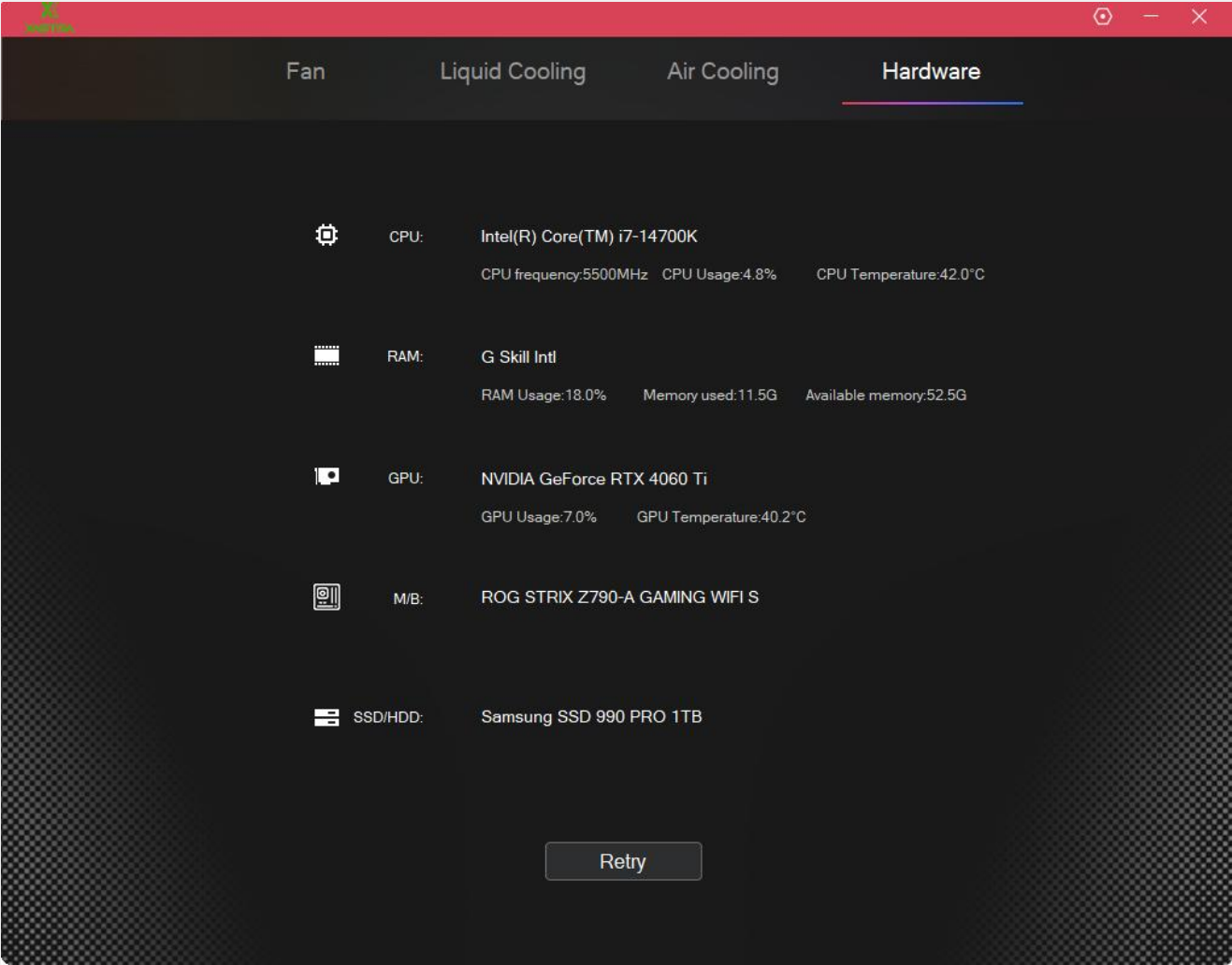
## Dashboard for Pixel Drawing Tool of Cooling



# Hardware

The **Hardware** page displays the system configuration and current utilization information of your device. System configuration and current utilization information includes the following:

- **CPU**
  - Model
  - Frequency
  - Usage
  - Temperature
- **RAM**
  - Model
  - Usage
  - Memory used
  - Available memory
- **GPU**
  - Model
  - Usage
  - Temperature
- **Motherboard**
  - Model
- **SSD/HDD**
  - Model



# Setting

The settings section has **Language**, **Version**, and **Boot Startup**.

**Language** — To set app display language.

**Version** — The current app version.

**Boot Startup** — To change auto-launch on system boot.

